

# MODULOS INFRAROJOS

**KIT0088 MANDO A DISTANCIA + RECEPTOR COMPATIBLE**



**MD9066 MODULO GY-9960-3.3 APDS-9960 DETECCION DE GESTOS SIN CONTACTO**

**KS0009 INTERRUPTOR FOELECTRICO IR**



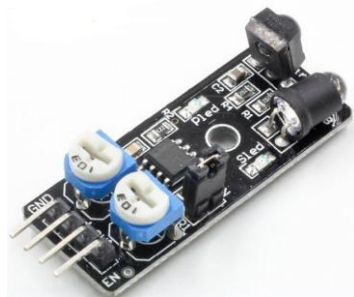
**KS0026 RECEPTOR INFRAROJO IR**



**KS0015 PULSE RATE MONITOR IR**



**KY0032 SENSOR DETECCION OBSTACULOS IR**



**KS0027 EMISOR INFRAROJO IR**



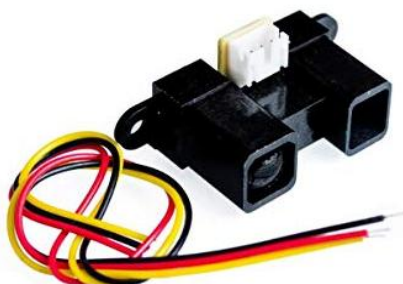
**MD9010 MODULO SENSOR INFRRAROJOS 3-80 CM**



**KS0050 SENSOR TRACKING IR**

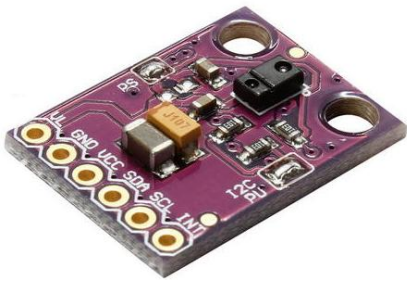


**MD9055 MODULO GP2Y0A21YK0F 2Y0A21 10-80CM SENSOR DE DISTANCIA**



**MD9025 MODULO SENSOR OBSTACULOS IR**

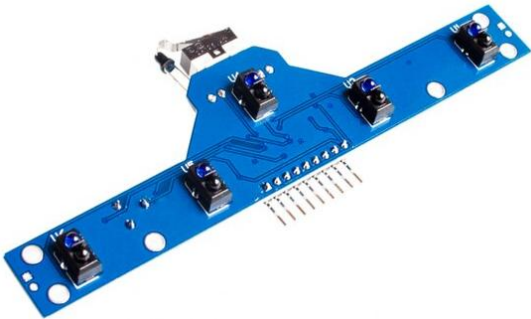




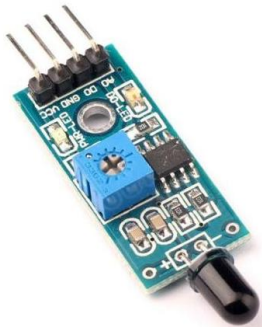
**MD9078 SENSOR DE IR 3 CANALES**



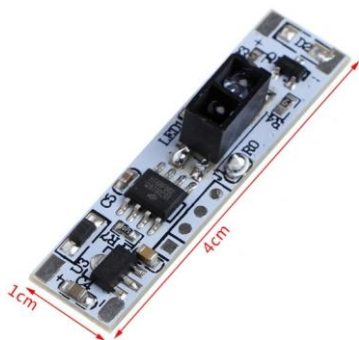
**MD9109 TCRT5000 MODULO SENSOR  
SEGIMIENTO 5 CAMINOS**



**MD9092 MODULO SENSOR IR DE LLAMA 4  
CABLES**



**MD9181 MODULO BARRIDO MANUAL  
XK-GK-4010A**



## *MODULOS PIR*

**MD0052 SENSOR PIR**



**MD9046 MODULO SENSOR PIR HC-SR501**



## *MODULOS ULTRASONIDOS*

**MD0017 MODULO SENSOR ULTRASONIDOS  
HC-SR04**



**MD0017/0040 SOPORTE MODULO SENSOR  
ULTRASONIDOS HC-SR04**

