

EQUIVALENCIAS SINTONIZADORES

TV

| CODIGO ORIGINAL | MOLGAR |
|-----------------|---------|
| 1 465 301 11 | RF 055 |
| 1 693 358 11 | RF 077 |
| 100 969 80 | RF 108 |
| 101 197 40 | RF 119 |
| 101 298 40 | RF 103 |
| 101 435 00 | RF 102 |
| 102 575 50 | RF 110 |
| 102 891 90 | RF 109 |
| 103 671 20 | RF 091 |
| 104 043 80 | RF 052 |
| 104 441 20 | RF 111 |
| 104 676 10 | RF 112 |
| 110 977 80 | RF 105 |
| 113 139A | RF 050 |
| 152192 BN | RF 040 |
| 1601 DKC | RF 055 |
| 1812939 | RF 013N |
| 1813437 | RF 010 |
| 200 743 20 | RF 086 |
| 201 487 30 | RF 066 |
| 201 829 80 | RF 085 |
| 202 483 60 | RF 074 |
| 202 483 90 | RF 074 |
| 203 465 40 | RF 083 |
| 204 384 16 | RF 084 |
| 204 663 20 | RF 116 |
| 204 988 10 | RF 053 |
| 204 990 50 | RF 053 |
| 205 596 90 | RF 080 |
| 207 047 50 | RF 082 |
| 207 654 909 | RF 062 |
| 208 088 80 | RF 087 |
| 208 122 80 | RF 088 |
| 208 213 20 | RF 081 |
| 21-3723-2 | RF 032 |
| 2200 PHC | RF 072 |
| 2201 PHC | RF 055 |
| 2422 542 90044 | RF 063 |
| 273 575 | RF 055 |
| 282835 | RF 055 |
| 29504.301.01 | RF 132 |
| 29504201.21 | RF 064 |
| 29504201.31 | RF 064 |
| 302 495 15 | RF 046 |
| 302 496 15 | RF 045 |
| 302 496 16 | RF 045 |
| 3112 297 10601 | RF 055 |
| 3112 297 10601 | RF 136 |
| 3112 297 10961 | RF 055 |
| 3122 237 00441 | RF 055 |
| 3122 237 00451 | RF 072 |
| 3122 297 10601 | RF 055 |
| 3139 147 10030 | RF 032 |
| 3139 147 10031 | RF 032 |
| 3139 147 10040 | RF 032 |
| 3139 147 10041 | RF 032 |
| 3139 147 10362 | RF 055 |
| 3139 147 10731 | RF 032 |
| 3139 147 10771 | RF 032 |
| 3139 147 10772 | RF 032 |
| 3139 147 10781 | RF 032 |
| 3139 147 10782 | RF 032 |
| 3139 147 11931 | RF 032 |
| 3139 147 11932 | RF 032 |
| 3139 147 12010 | RF 078 |
| 3139 147 12631F | RF 055 |
| 3139 147 15751N | RF 062 |
| 3139 147 15771 | RF 135 |
| 3139 147 19171J | RF 137 |
| 3303 KHC | RF 065 |
| 339339710 | RF 046 |

| CODIGO ORIGINAL | MOLGAR |
|-----------------|---------|
| 3400KHC | RF 032L |
| 3402PHC | RF 114 |
| 349354302 | RF 101 |
| 349355065 | RF 042 |
| 349355065 | RF 042 |
| 349357096 | RF 030 |
| 349357098 | RF 037 |
| 35034500 | RF 089 |
| 35034520 | RF 089 |
| 3749 321 00487 | RF 055 |
| 3X1 289 | RF 065 |
| 40453780 | RF 104 |
| 4819 210 50124 | RF 055 |
| 4822 206 10405 | RF 032 |
| 4822 210 10365 | RF 055 |
| 4822 210 10406 | RF 032 |
| 4822 210 10432 | RF 055 |
| 4822 210 10448 | RF 032 |
| 4822 210 10455 | RF 040 |
| 4822 210 10464 | RF 095 |
| 4822 210 10477 | RF 032 |
| 4822 210 10488 | RF 032 |
| 4822 210 10498 | RF 032 |
| 4822 210 10507 | RF 060 |
| 4822 210 10554 | RF 032 |
| 4822 210 10611 | RF 055 |
| 4822 210 10636 | RF 060 |
| 4822 210 10642 | RF 060 |
| 4822 210 10691 | RF 056 |
| 4822 210 10715 | RF 055 |
| 4822 210 10739 | RF 038 |
| 4822 210 50122 | RF 072 |
| 4822 210 50123 | RF 055 |
| 4822 210 50124 | RF 055 |
| 4822 212 22295 | RF 031 |
| 4830 210 47022 | RF 062 |
| 4848400 | RF 032 |
| 503 TX 0311 | RF 008 |
| 503 TX 0355 | RF 126 |
| 503 TX 0367 | RF 037 |
| 503 TX 0381 | RF 008 |
| 503 TX 0395 | RF 100 |
| 503 TX 0402 | RF 008 |
| 503 TX 0461 | RF 116 |
| 503 TX 0491 | RF 053 |
| 503 TX 0542 | RF 074 |
| 5100C | RF 046 |
| 5823 1003 | RF 055 |
| 5823 1008 | RF 032 |
| 5823 1011 | RF 032 |
| 6136000 | RF 032 |
| 645 007 8941 | RF 076 |
| 6700R-PG01E | RF 140 |
| 6700R-PL01G | RF 140 |
| 6700R-PL02G | RF 140 |
| 729 474 7 | RF 032 |
| 729 147 7 | RF 032 |
| 75RL | RF 013 |
| 8 598 045 10 | RF 055 |
| 8 598 270 00 | RF 071 |
| 8 598 331 01 | RF 063 |
| 8 598 331 02 | RF 063 |
| 8 619 139 440 | RF 055 |
| 8-598-591-00 | RF 133 |
| 90189900 | RF 042 |
| 920773 | RF 055 |
| AA40 10001G | RF 065 |
| BG 2003 | RF 030 |
| BG 2015 | RF 037 |
| BT-AG402 | RF 133 |
| BTP EC411 | RF 055 |

| CODIGO ORIGINAL | MOLGAR |
|-----------------|---------|
| BTP RG421 | RF 071 |
| CTT 5000T | RF 087 |
| CTT 5010 | RF 088 |
| CTT 5020N | RF 075 |
| CTT 5045 | RF 068 |
| DT2 BV08P | RF 013 |
| DT2-BV12P | RF 013N |
| E 2780 | RF 062 |
| E 2787-04 | RF 062 |
| E 710024 | RF 055 |
| E 710030 | RF 055 |
| E59 11 036 2120 | RF 033 |
| E59 14 034 | RF 074 |
| ECC 2885CE | RF 013 |
| ENH 17607 FRG | RF 018 |
| ENV57D29F1 | RF 113 |
| ENV57D44G3 | RF 113 |
| ET 3D1 E08 W | RF 065 |
| ET EC IB 0115 | RF 051 |
| ET-3C1-EC | RF 013 |
| EVIT-3K2-E01W | RF 130 |
| EW T5V3K2 E01W | RF 062 |
| F 2077-05 K | RF 032 |
| F 2471-05 K | RF 032 |
| F 2477-05 K | RF 032 |
| F-6003T | RF 027 |
| FE 4210 | RF 085 |
| FE 5100 | RF 083 |
| FE 5201 | RF 080 |
| FE 6100 | RF 081 |
| FE 6200 | RF 082 |
| FI 2108 | RF 112 |
| FI 2108-TXG | RF 112 |
| FI 2120 | RF 101 |
| FI 2133 | RF 102 |
| FI 2133F-01 | RF 102 |
| FI 2136 | RF 122 |
| FI 2139 | RF 103 |
| FI 2145 | RF 121 |
| FI 2148 | RF 123 |
| FI 2149-01 | RF 104 |
| FI 2153 | RF 102 |
| FI 2156 | RF 100 |
| FI 2205 | RF 124 |
| FI 2205 | RF 124 |
| FI 2236-01 | RF 105 |
| FI 2239 | RF 126 |
| FI 2248-RE | RF 116 |
| FI 2308 | RF 112 |
| FI 2308 | RF 112 |
| FI 2339 | RF 107 |
| FI 2343 | RF 108 |
| FI 2349 | RF 109 |
| FI 2360 | RF 117 |
| FI 2365 | RF 118 |
| FI 2600 | RF 119 |
| FI 2605 | RF 120 |
| FI 2605 | RF 130 |
| FI 3341 | RF 110 |
| FI 3342 | RF 110 |
| FI 3353/L | RF 111 |
| FI 916E / SV10 | RF 078 |
| FL 2463/84 | RF 090 |
| FL 2471/84 | RF 089 |
| FL 2476/84 K | RF 055 |
| FL 2477/85 | RF 055 |
| FL 2478/84 K | RF 055 |
| FP 1512/12 | RF 038 |
| FP 2077/54 | RF 040 |
| FP 912 / 22 | RF 038 |
| FQ 816 ME/ IF | RF 060 |

| CODIGO ORIGINAL | MOLGAR |
|------------------|--------|
| FQ 816 ME/B | RF 060 |
| FQ 916 ME/ PH | RF 060 |
| FQ 916 ME/L-IF | RF 060 |
| FQ 916 ME/L-MK2 | RF 060 |
| FQ 916ME/PH MK2 | RF 060 |
| FSTDC-3H-5V | RF 132 |
| HPT 200S | RF 055 |
| HTV 200S | RF 032 |
| HTVL 200S | RF 032 |
| IFB 389 | RF 012 |
| KHC 2000-IEC | RF 032 |
| KS V 77 | RF 013 |
| MC4 UG3602 | RF 067 |
| MDK6-701 | RF 127 |
| MDLK3B483 | RF 034 |
| MFT 1000 | RF 084 |
| MFT 1010 | RF 086 |
| MHK6B701 | RF 128 |
| MPM 1000 | RF 042 |
| MPM 1040 | RF 042 |
| MPT 1000T | RF 042 |
| MRF7 UE32/34/37 | RF 049 |
| MRF7-UE32 | RF 141 |
| MTC 3 006750 00 | RF 040 |
| MTM 2015.00 | RF 037 |
| MTM 2015.01 | RF 037 |
| MTM 4045 | RF 074 |
| MTM BG2024 | RF 066 |
| MTP 2003 | RF 030 |
| MTP 2015.01 | RF 037 |
| MTP 4015 | RF 053 |
| MTP 4015F | RF 053 |
| MTP MM 2003 | RF 030 |
| MTP MM 2015.03 | RF 037 |
| MTP MM 4015FN | RF 053 |
| MTP-L2007 | RF 115 |
| PERF0115 | RF 008 |
| PU 599541M | RF 028 |
| PU 599980M6 | RF 008 |
| RCNVR0010GEZZ | RF 048 |
| RMUS23655EA | RF 029 |
| RO152AJ M | RF 057 |
| RTUNH0100BMZZ | RF 032 |
| RTUNH0104BMZZ | RF 032 |
| RTUNH0116BMZZ | RF 032 |
| SAR TU | RF 072 |
| SK 1190 | RF 032 |
| SK 1290 A | RF 032 |
| SK 1292 A | RF 032 |
| SK 1490 A | RF 032 |
| SM14437A | RF 005 |
| SUF 710 | RF 032 |
| SUF 718 | RF 040 |
| SZ99 A EW08 | RF 065 |
| T 2002 | RF 055 |
| TADC-G155D | RF 140 |
| TADC-G252D G/K/I | RF 140 |
| TBCB 40118EA | RF 047 |
| TCMK0601PD11C | RF 140 |
| TECC0949VG29B(S) | RF 130 |
| TECC0949VG33B(S) | RF 130 |
| TECC0985VA14A(K) | RF 013 |
| TECC2949VG28K | RF 134 |
| TECC2949VG28K | RF 134 |
| TECC2949VG28K(C) | RF 062 |
| TECC2989VA15B(T) | RF 065 |
| TECC2989VA24A | RF 013 |
| TECC2989VA24B | RF 065 |
| TECC7949VG28A | RF 062 |
| TECC7949VG28A | RF 134 |
| TECC7949VG28A | RF 134 |

| CODIGO ORIGINAL | MOLGAR |
|---------------------|---------|
| TEED1-021A | RF 043 |
| TEKB1 014A | RF 079 |
| TEKB1 030A | RF 079 |
| TEKB7 004A | RF 073 |
| TEKE1 163A | RF 013 |
| TEKE4 005B | RF 013 |
| TEKE4 034B | RF 074 |
| TEKE9 021A | RF 017 |
| TEKE9-025A | RF 131 |
| TELE1 015A | RF 063 |
| TELE9-009A | RF 091 |
| TELE9-021A | RF 091 |
| TELE9X009A | RF 091 |
| TEMD1 021 | RF 074 |
| TERE1 006A | RF 013N |
| TLMG1 101A | RF 077 |
| TMDG1-604A | RF 129 |
| TMLG1 109A | RF 077 |
| TMLG2 103A | RF 077 |
| TMUE3 114A | RF 076 |
| TUGZ1 A64A | RF 074 |
| TUKG4D07F | RF 065 |
| U 943C / IEC | RF 095 |
| UG 3602 | RF 067 |
| UHF 5100C | RF 046 |
| UV 1315/A 1-2 | RF 062 |
| UV 1316 | RF 135 |
| UV 1316/AIU-2 | RF 135 |
| UV 1316/AS - I | RF 062 |
| UV 1317/A I G-3 | RF 137 |
| UV 1317/AS - I | RF 062 |
| UV 411 / IEC | RF 031 |
| UV 412 / 256 IEC | RF 038 |
| UV 413 | RF 031 |
| UV 417 | RF 031 |
| UV 418 / 256 MK2 | RF 038 |
| UV 616S / 256 | RF 072 |
| UV 617 | RF 040 |
| UV 617/PH | RF 032 |
| UV 617S | RF 040 |
| UV 618 / 256 | RF 040 |
| UV 627 | RF 032 |
| UV 711/IEC | RF 032 |
| UV 711/PHONO | RF 032 |
| UV 816 | RF 055 |
| UV 816 / PLL | RF 055 |
| UV 816 KR21 | RF 055 |
| UV 816 KR21 | RF 136 |
| UV 913 / IEC | RF 032 |
| UV 914/IEC | RF 055 |
| UV 914/IEC/L | RF 055 |
| UV 915E | RF 032 |
| UV 915E / IEC | RF 032 |
| UV 916E / 9V / IEC | RF 055 |
| UV 916E / IEC | RF 055 |
| UV 916E / PLL / IEC | RF 055 |
| UV 916M / IEC / L | RF 055 |
| UV 916S | RF 056 |
| UV 917E | RF 032 |
| UV 917E / IEC | RF 032 |
| UV E33-F07 | RF 013N |
| UW 711 | RF 032 |
| VEQ 0621 | RF 061 |
| VHF 4100C | RF 045 |
| VHF 4110X | RF 045 |
| VHF 4200 | RF 045 |
| VTS 1S DHP | RF 050 |
| VTSA 1CPL | RF 070 |
| VTSA 1SPL | RF 069 |
| VTSA 1SZ3 | RF 013 |
| VTUA TEKB7 004 | RF 073 |

RF 005

5M14437D. SANYO, ...



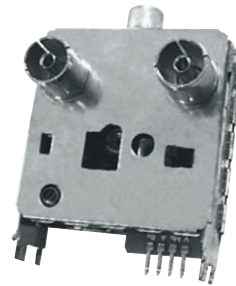
RF 008

PU 599980M6. JVC, SANYO, ...



RF 010

1813437. AMSTRAD, AIWA, ...



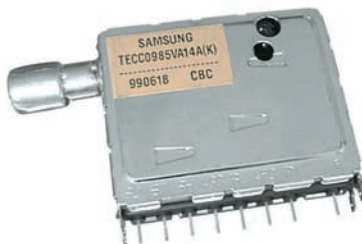
RF 012

FB 389. SONY, ...



RF 013

VTSA 1SZ3 (TOMA DE ANTENA). SAMSUNG, SANYO, ...



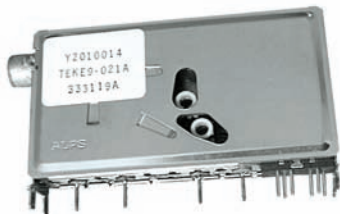
RF 013F

VTSA 1SZ3 (TOMA DE ANTENA). SAMSUNG, SANYO, ...



RF 017

TEKE9 021A. THOMSON, ...



RF 018

ENH 17607 FRG. AMSTRAD, FUNAI, ...



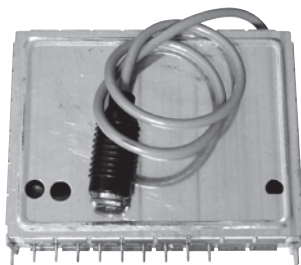
RF 028

PU 599541M. JVC, ...



RF 027

F 6003T. SANYO, ...



RF 029

RMUS23655EA. SAMSUNG, ...



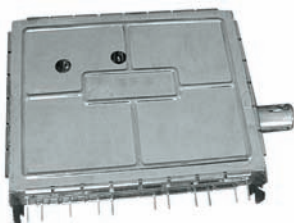
RF 030

MTP 2003. THOMSON, ...



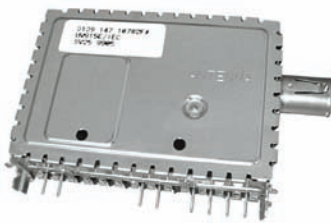
RF 031

UV 411/IEC. PHILIPS, ...



RF 032

UV 917E. PHILIPS, ...



RF 033

E59110362120. AKAI, ...



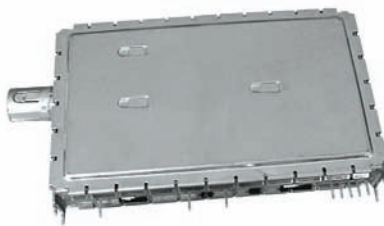
RF 034

MDLK3B483. AMSTRAD, ...



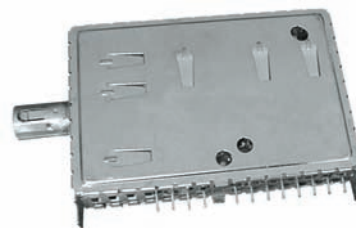
RF 037

MTM 2015. THOMSON, ...



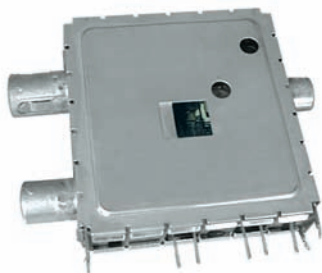
RF 040

UV 617S. PHILIPS, ...



RF 042

MPM 1000. THOMSON, ...



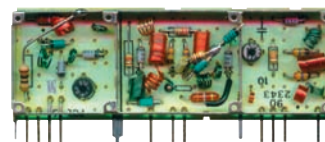
RF 043

TEED1 A21A. SANYO, ...



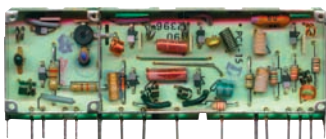
RF 045

VHF 4100C. THOMSON VHF.



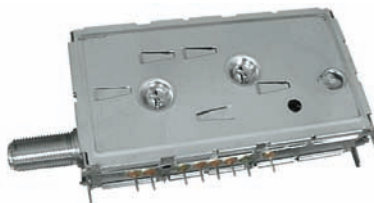
RF 046

UHF 5100C. THOMSON UHF.



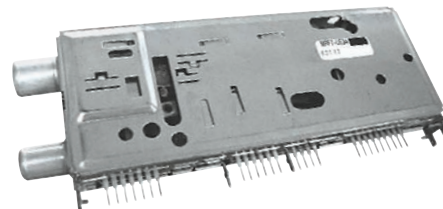
RF 047

TBCB 40118EA. SAMSUNG, ...



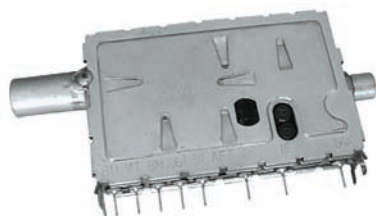
RF 049

MRF UE 32 / UE34. ORION, ...



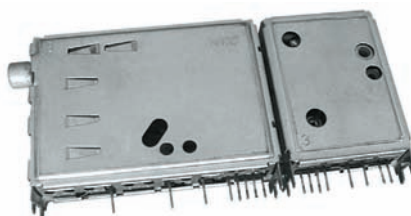
RF 050

VTS 1S DHP. GOLDSTAR, ...



RF 051

ET EC 1B 0115. GOLDSTAR, ...



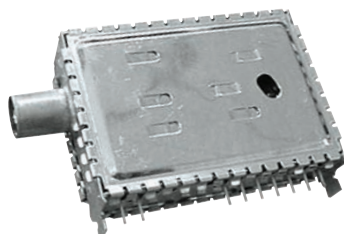
RF 053

MTP 4015F. THOMSON, ...



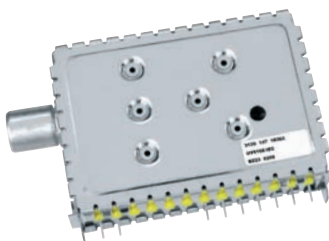
RF 055

UV 916E. SONY, PHILIPS, ...



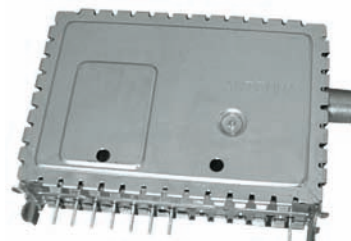
RF 055/0

UV 916E. ORIGINAL SONY.



RF 056

UV 916S. PHILIPS, ...



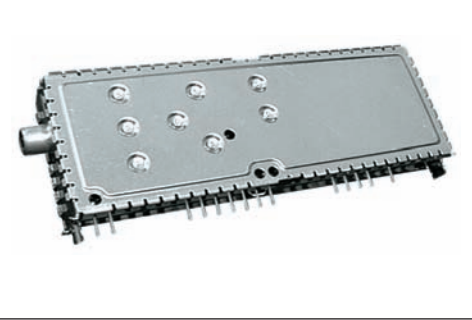
RF 057

R0152AJM. SANYO, SONY, ...



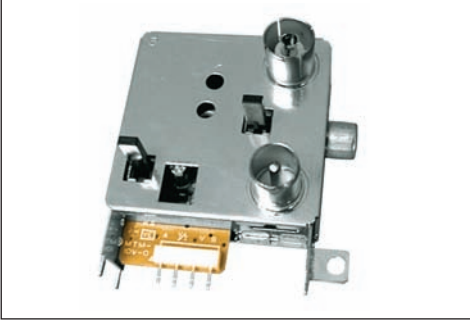
RF 060

FQ 916ME/PH. PHILIPS, ...



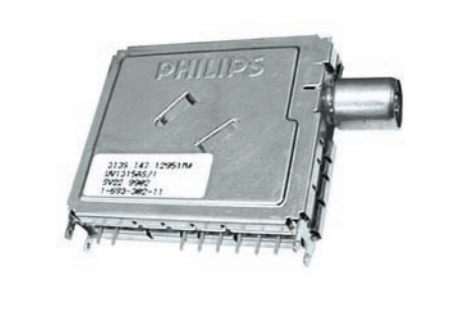
RF 061

VEQ 0621. PANASONIC, ...



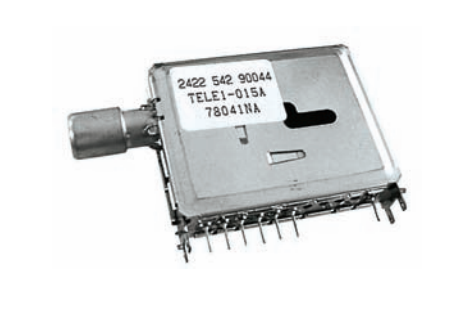
RF 062

UV 1315AS/I. PHILIPS, ...



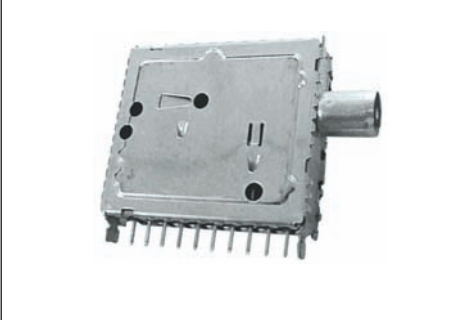
RF 063

TELE1 015A. PHILIPS, ...



RF 064

29504201.21 - 29504201.31. THOMSON, ...



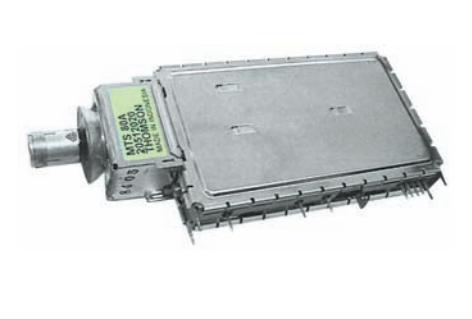
RF 065

TECC 2989VA15B. SAMSUNG



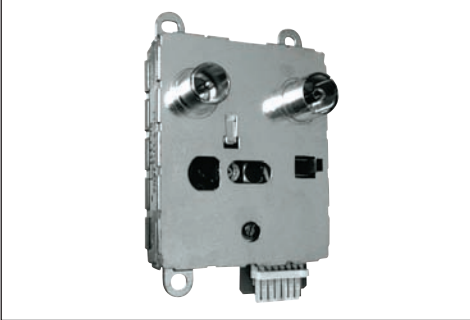
RF 066

MTMBG 2024. THOMSON, ...



RF 067

MC4 UG3602. SAMSUNG, ...



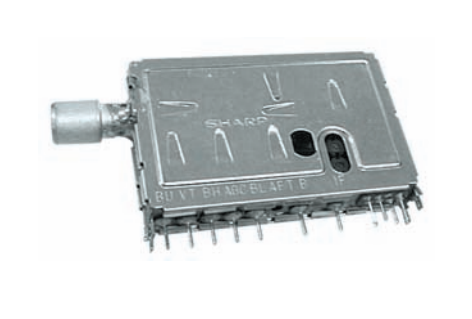
RF 068

CTT 5045. THOMSON, ...



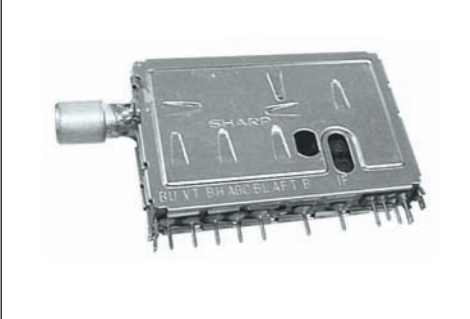
RF 069

VTSA 1SPL. SHARP, ...



RF 070

VTSA 1CPL. SHARP, ...



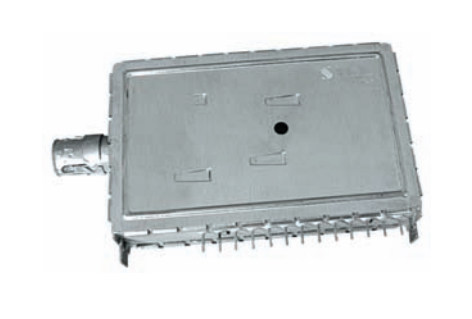
RF 071

BTP RG421. SONY, ...



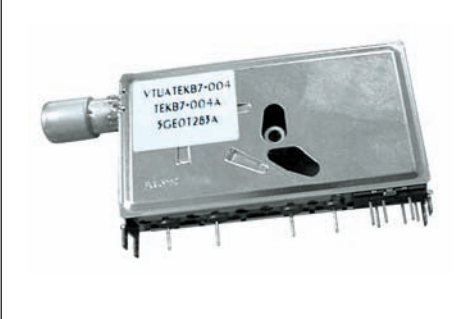
RF 072

UV 616S/256. PHILIPS, ...



RF 073

TEKB 7004A. SHARP, ...



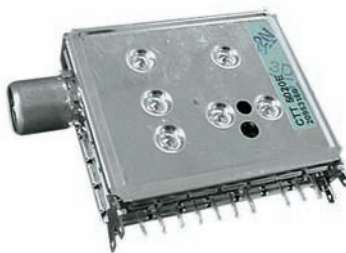
RF 074

MTM 4045. THOMSON, ...



RF 075

CTT 5020N. THOMSON, ...



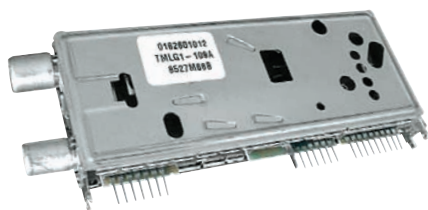
RF 076

TMUE3 114A. SANYO, ...



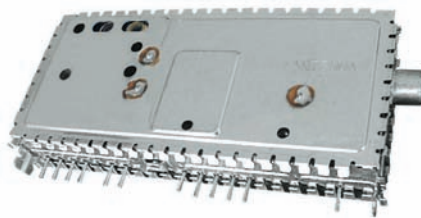
RF 077

TMLG2 101A / 103A / 109A. ORION, SONY, ...



RF 078

FI 916E SV10. PHILIPS, ...



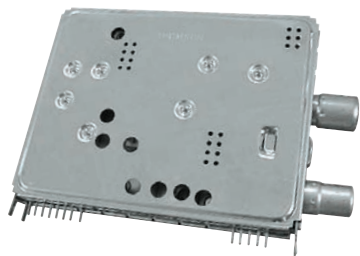
RF 079

TEKB1 014A. AKAI, ...



RF 080

FE 5201. THOMSON, ...



RF 081

FI 6100. THOMSON, ...



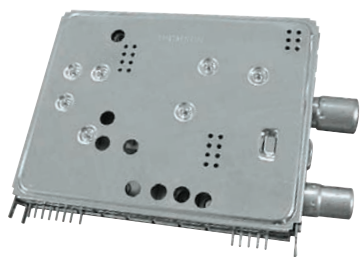
RF 082

FE 6200. THOMSON, ...



RF 083

FE 5100. THOMSON, ...



RF 084

MFT 1000. THOMSON, ...



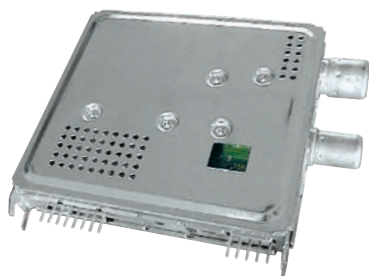
RF 085

FE 4210. THOMSON, ...



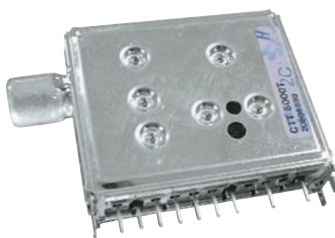
RF 086

MFT 1010. THOMSON, ...



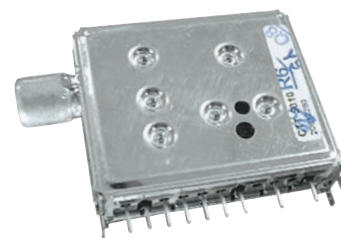
RF 087

CTT 5000T. THOMSON, ...



RF 088

CTT 5010. THOMSON, ...



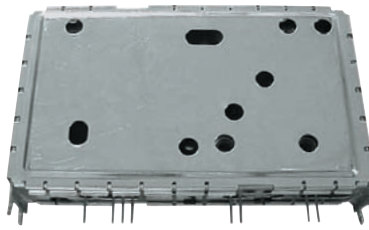
RF 091

TELE9-009A - TELE9-021A. THOMSON, ...



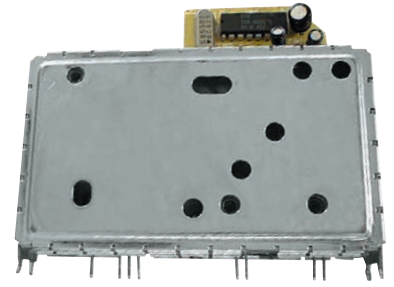
RF 107

FI 2339. THOMSON, ...



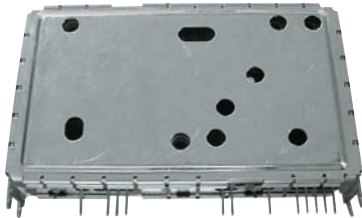
RF 108

FI 2343. THOMSON, ...



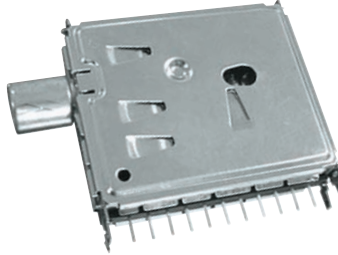
RF 112

FI 2308. THOMSON, ...



RF 113

HIPERBANDA STANDARD. ENV57D29F1. 11 PINES. NOKIA, ...



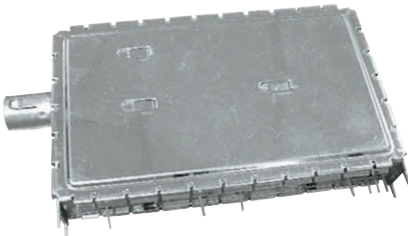
RF 114

3402PHC. NOKIA, ...



RF 115

MTP L2007. THOMSON, ...



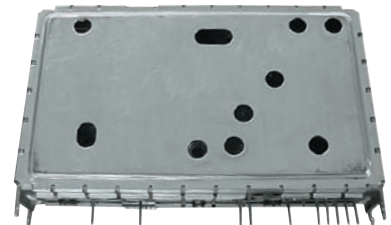
RF 116

FI 2248 RE. THOMSON, ...



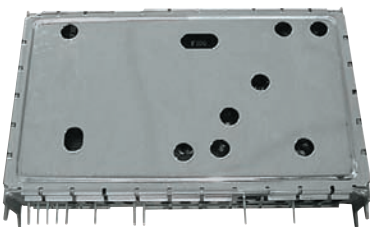
RF 117

FI 2360. THOMSON, ...



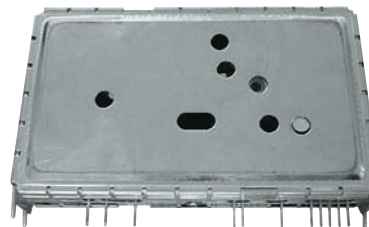
RF 118

FI 2365. THOMSON, ...



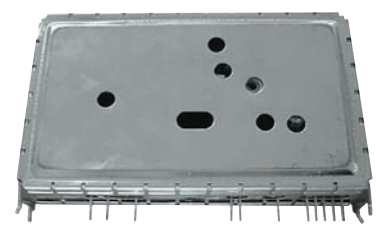
RF 119

FI 2600. THOMSON, ...



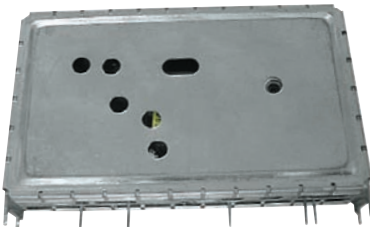
RF 120

FI 2605. THOMSON, ...



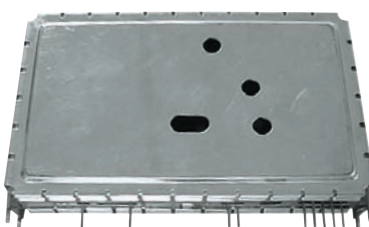
RF 121

FI 2145. THOMSON, ...



RF 123

FI 2148. THOMSON, ...



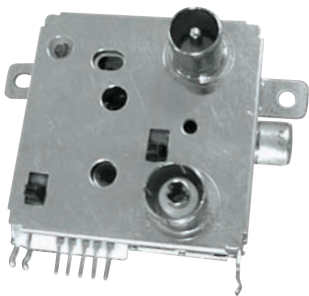
RF 124

FI 2205. THOMSON, ...



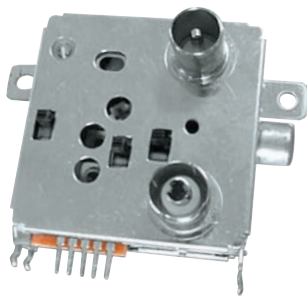
RF 127

MDK6 701.



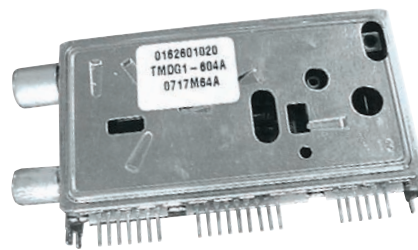
RF 128

MHK6B701.



RF 129

TMDG1 604A. KNEISSEL, ...



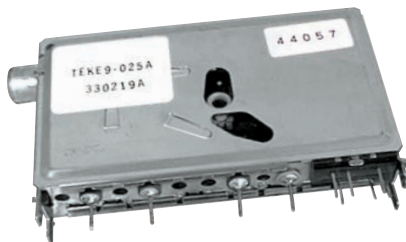
RF 130

TECC0949VG33B. SAMSUNG, ...



RF 131

TEKE9 025A. THOMSON, ...



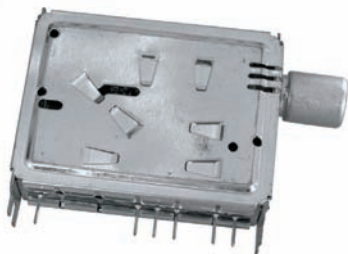
RF 132

29504.301.01. GRUNDIG, ...



RF 133

BT AG402. SONY, ...



RF 134

TECC2949VG28K. SAMSUNG, ...



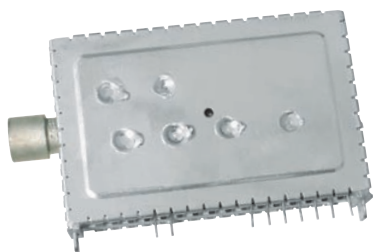
RF 135

UV1316. PHILIPS, ...



RF 136

UV1816. PHILIPS, ...



RF 137

UV1317/A. PHILIPS, ...



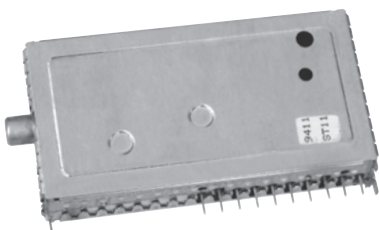
RF 138

TELE9 084A/DT5 BF18D. DAEWOO, ...



RF 139

29504 201.14. GRUNDIG, ...



RF 140

TADC-G155D. LG, ...



RF 141

MRF-UE32. ORION, KNEISSEL, ...

